

NAVA GPS OFFICE



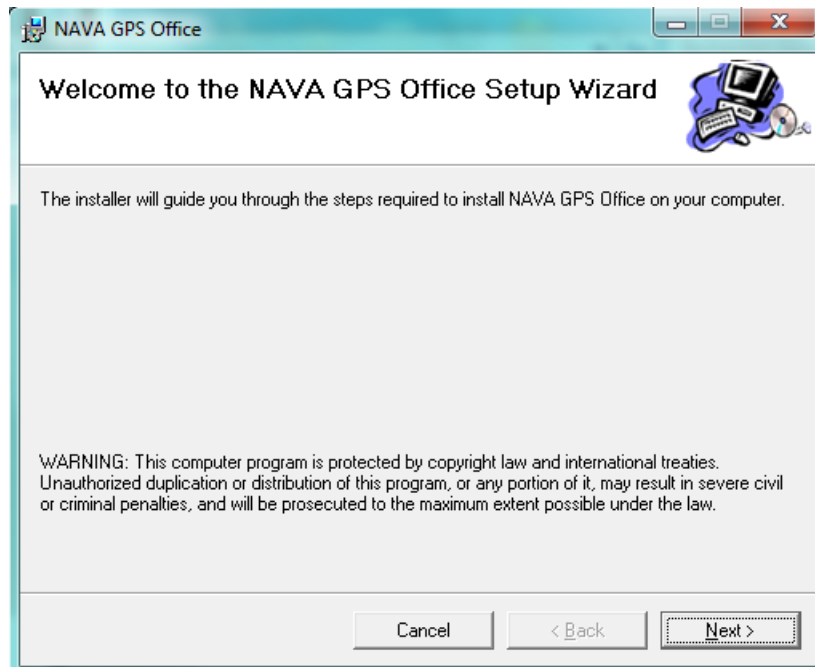
Contents

I. Installing software and driver.....	3
1) NAVA GPS Office Installing.....	3
2) Driver Installing.....	4
II. Interface introduction.....	5
III. Functionality.....	6
1) File.....	6
a. Opening.....	6
b. Saving.....	6
c. Exchange with GPS.....	7
d. Printing.....	8
2) View.....	8
3) Find.....	8
4) Tools.....	10
a. Create Waypoint.....	10
b. Create route.....	11
c. Measure.....	12
d. Custom icon mode.....	12
e. Map setting.....	13
5) Option	14
6) Help.....	14
IV. Data Conversion.....	15

I. Installing software and driver

1) NAVA GPS Office Installing

- Double-click on “**Setup**” icon in Nava GPS Office file to start the installing.
- The following page will pop-up automatically high NEXT continuously and select CLOSE at last.



2) Driver Installing

- Connect your device to the computer with data line.
- Put CD into driver
- Found new hardware wizard will appear on the computer. Select **INSTALL FROM A LIST SPECIFIC LOCATION (ADVANCED)**, as

following:



- Select **INCLUDE THIS LOCATION IN THE SEARCH**, and then browse the files to find the catalogue where PC Drivers is in.

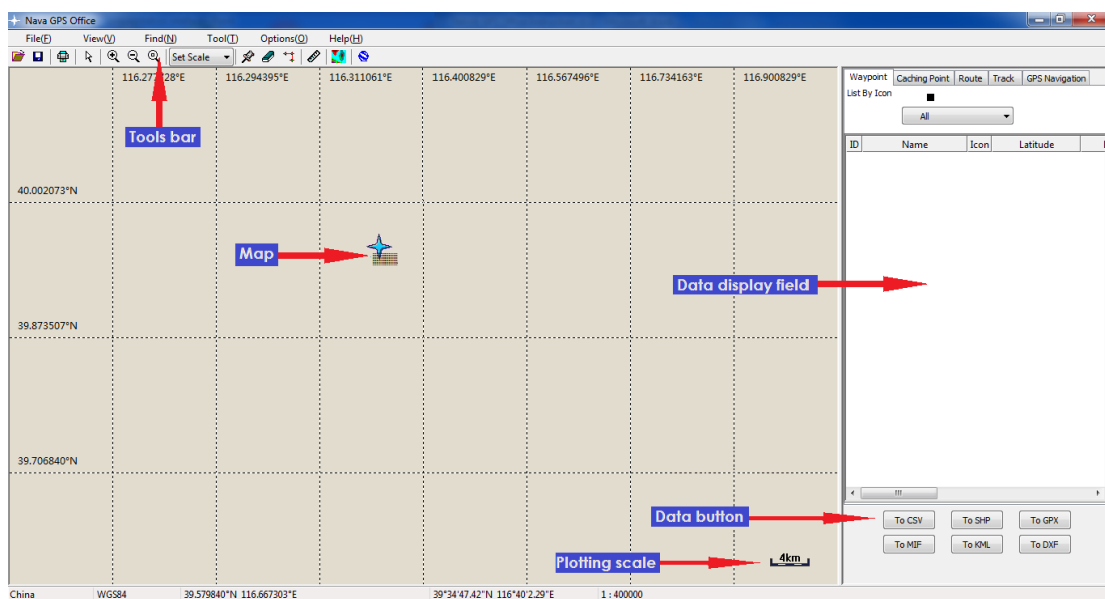


- When the message “ **The software BHC NAVA Series USB Device has not passed**”
- Windows logo testing to verify its compatibility with windows XP appears, select: **CONTINUE ANYWAY**
- Until computer points out Completing the Found new hardware wizard, highlight **FINISH**



II. Interface introduction

- Double-click the icon **NAVA GPS Office.exe** to open software



Tool bar: Shortcut of the main software tools



Map: This is where you view and edit your map

Data display field: You can view your data and save them to different formats using the data button

Data button: Use this button to save the data at the format CSV, SHP, GPX, MIF, KML and DXF

Plotting scale: You can change the scale with this plot

III. Functionality

1) File

a. Opening

- Select file then opening a choose the file to open
- Or you can use the Shortcut

b. Saving

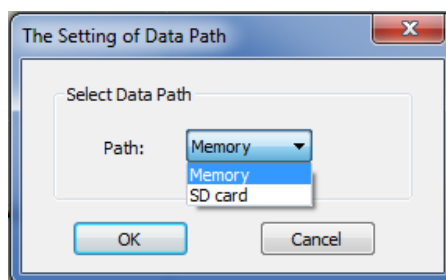
- Select file then save and give a name to your map
- Or you can use the Shortcut

c. Exchange with GPS

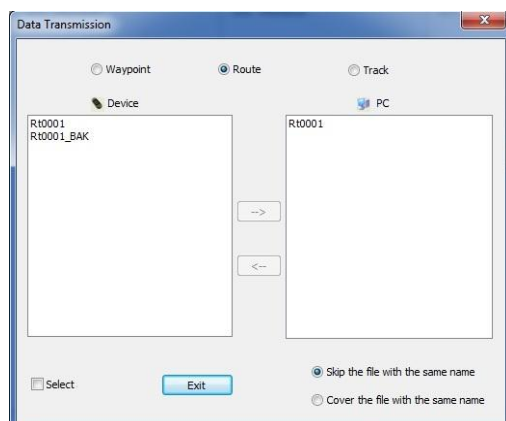
- Connect your device with the computer, set the mode as mass storage

- Select file then **exchange with GPS**

When this window appears choose between **SD card** and intern **Memory**.



- A new window pops up
- You can choose the type of data to be transferred
- You can choose download or upload data from GPS
- Select the data, and use the right or left arrow to upload or download from your device
- Press exit, return to the NAVA GPS Office home page



d. Printing

- Select file and print
- Setting the printer (Quality, quantity, size...)
- Select print

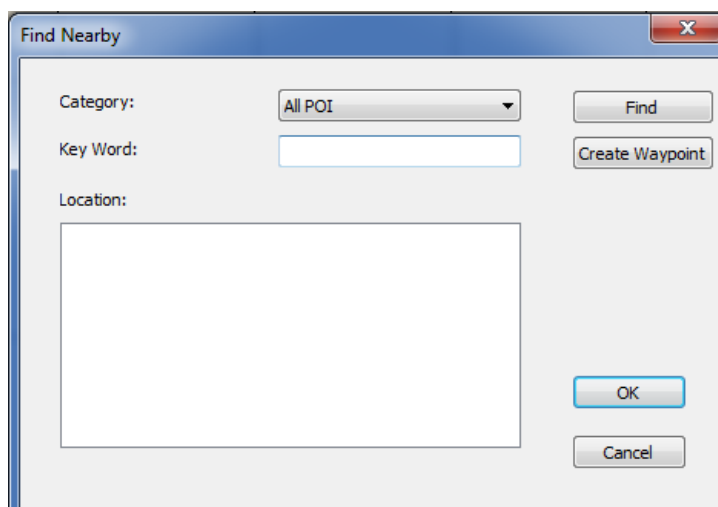
2) View

With this tool you can:

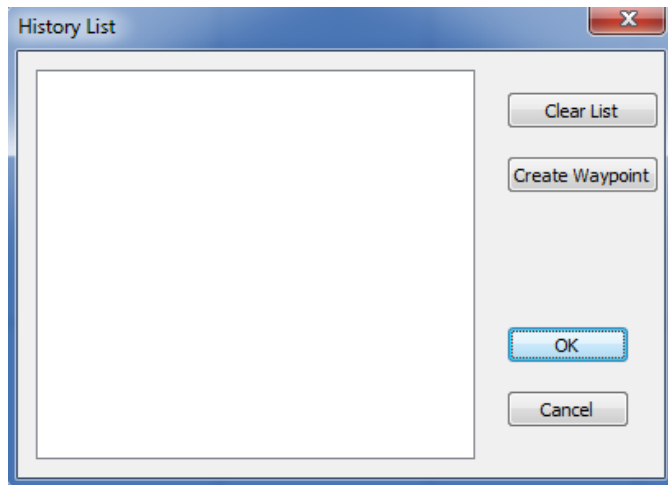
- Zoom in
- Zoom out
- Zoom to a specific area, track, waypoint...
- Show / mask toolbar
- Show / mask Status

3) Find

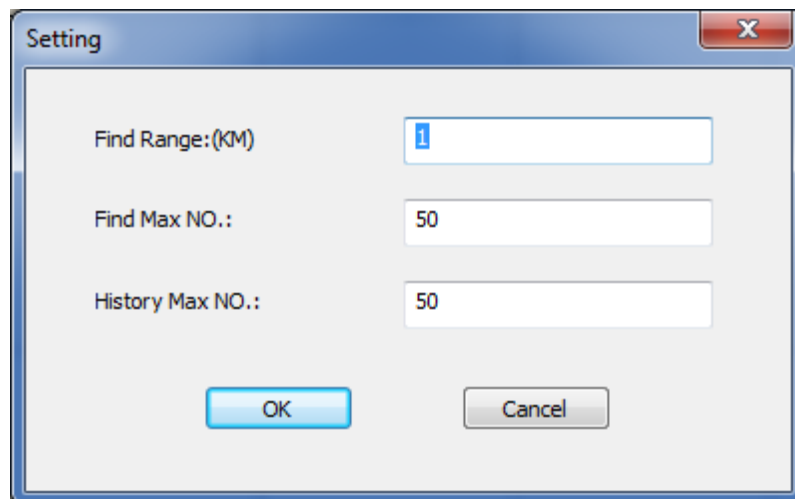
- Find nearby: quickly find a waypoint using a category or by keyword
- Research uses the parameters set in "Find setting"



- Find by history: you can see the history of research



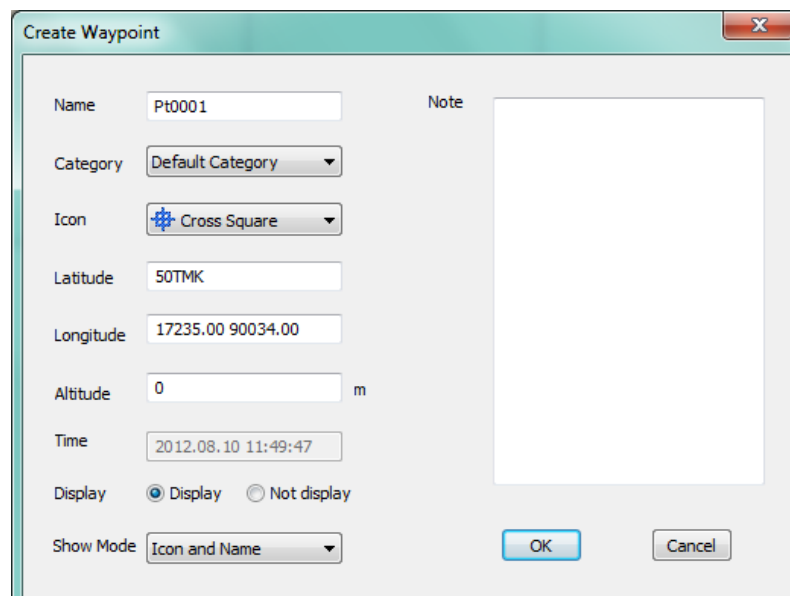
- Find setting: Configure the search parameters
 - Perimeter research
 - Research number
 - Research history max



4) Tools

a. Create Waypoint

- Select **Tool** then opening a choose **Create waypoint**
- Or you can use the Shortcut
- Click on the map, a window will appear
- Edit the new waypoint:
 - o Name
 - o Category
 - o Icon
 - o Latitude
 - o Longitude
 - o Altitude
 - o Note
 - o ...
- Select OK



Create Waypoint

Name: Pt0001

Category: Default Category

Icon: Cross Square

Latitude: 50TMK

Longitude: 17235.00 90034.00

Altitude: 0 m

Time: 2012.08.10 11:49:47

Display: ☒ Display ☐ Not display

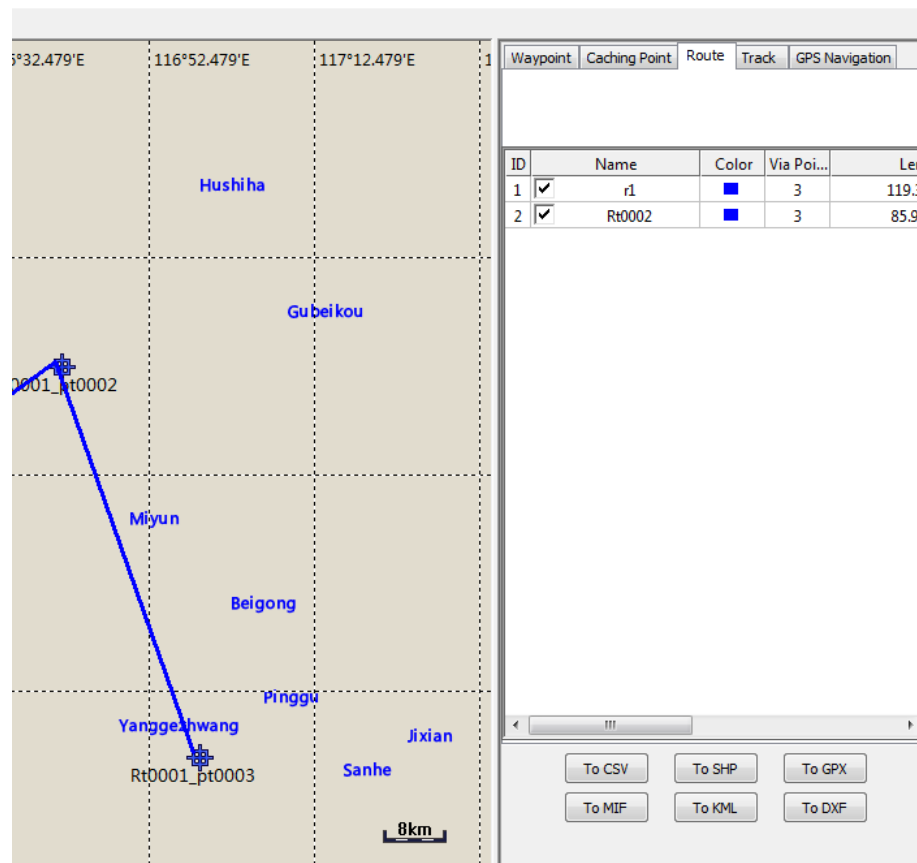
Show Mode: Icon and Name

Note: [Empty text area]

OK Cancel

b. Create route

- Select **Tool** then opening a choose **Create route**
- Or you can use the Shortcut
- Click on the map to add a point to the route.
- Right click on the map and select finish to create the route.
- You can edit your route's information in the window located at the right.



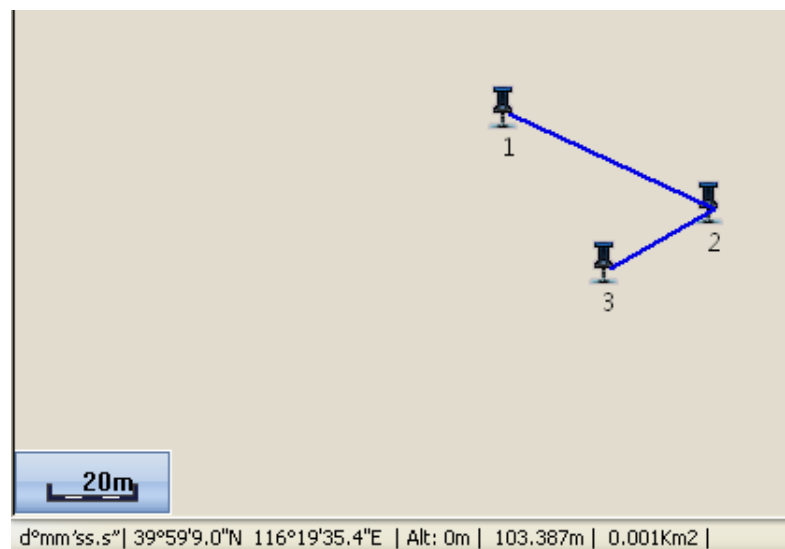
The screenshot displays the BHCnav+ software interface. On the left, a map shows a blue route line connecting two points. The starting point is labeled 'Rt0001_pt0002' and the ending point is 'Rt0001_pt0003'. The map includes geographical labels such as 'Hushiha', 'Gubeikou', 'Miyun', 'Beigong', 'Pinggu', 'Yanggezhuang', 'Jixian', and 'Sanhe'. A scale bar indicates 8km. The right-hand panel has tabs for 'Waypoint', 'Caching Point', 'Route', 'Track', and 'GPS Navigation'. The 'Route' tab is active, showing a table with route details.

ID	Name	Color	Via Poi...	Len
1	r1	■	3	119.3
2	Rt0002	■	3	85.9

Below the table, there are buttons for exporting the route: 'To CSV', 'To SHP', 'To GPX', 'To MIF', 'To KML', and 'To DXF'.

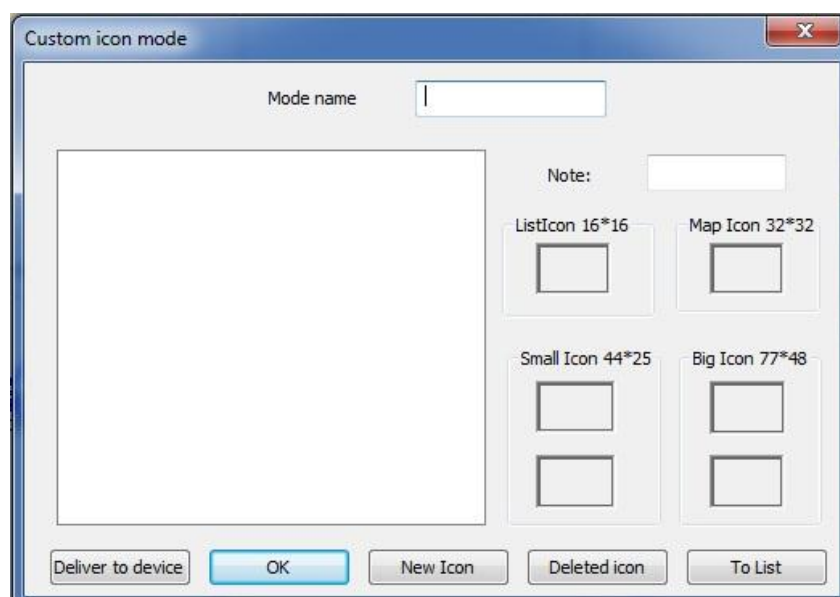
c. Measure

- On the tool bar, highlight the ruler icon to active the calculation function
- On the map, click the locations to calculate the distance, the result is shown below



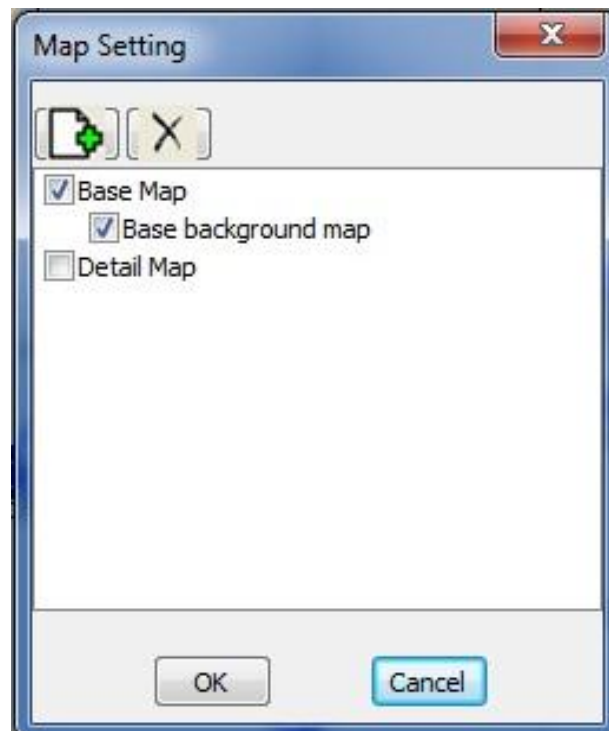
d. Custom icon mode

- Custom the icon to use for a waypoint



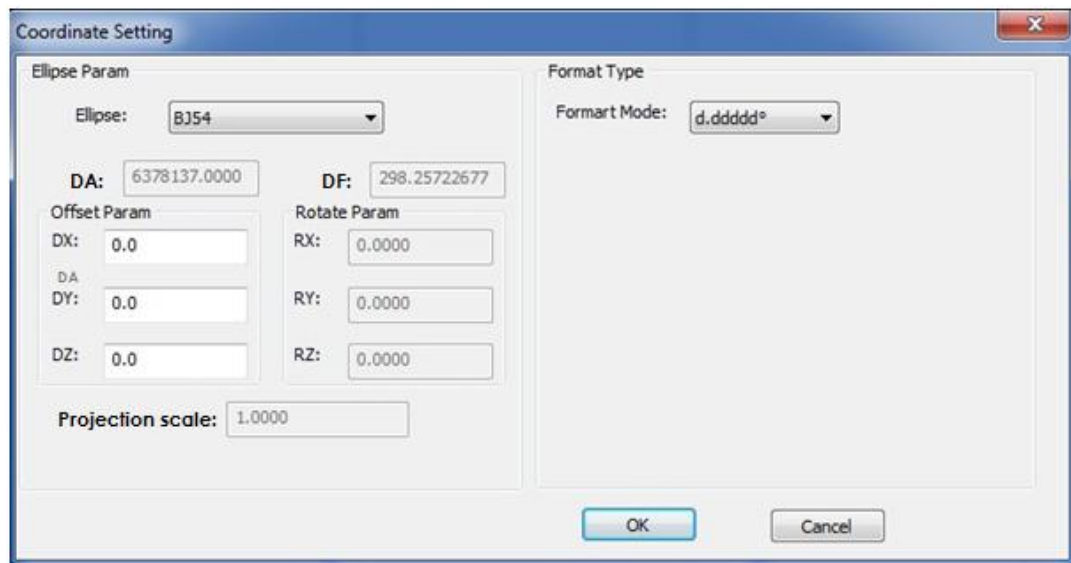
e. Map setting

- You can change the **Map** or load other map
- You can load multiple map by associating

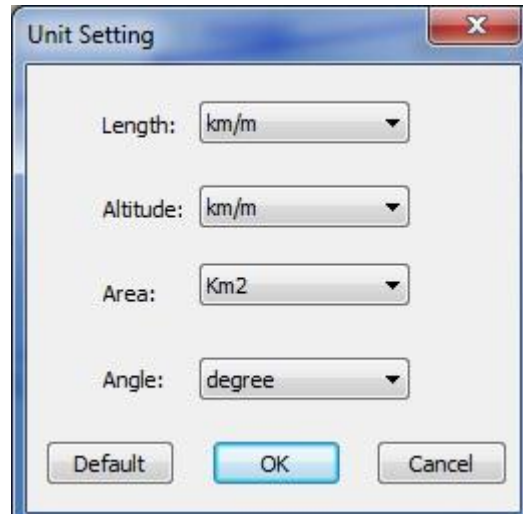


5) Option

- Set the coordinate system



- Set the unit setting



6) Help

- Learn more about the software
- See if there are updates

IV. Data Conversion

- On the title bar, highlight GPS content – Waypoint, route, track
- In the data display field appears the data
- Select one waypoint, route or track; highlight Map, showing the data on the map
- When you select one waypoint, route or track, highlight the format to CSV, to SHP, to MIF, to GPX to export the data into the computer

